



# WIFI MINI SOCKET USER GUIDE

Parameter:  
Model:VT-5002 SKU:8416  
VT-5002-BS SKU:8428  
Rated Voltage: 90V-250V AC  
Max. Current: 10A  
Wireless Standard: Wi-Fi 2.4Ghz  
Material: PC

1 Install V-TAC Smart Home App into smart phone or tablet device. Or scan the QR code, download and install into smart phone or tablet device.



Google Paly    IOS    Alexa/Google Home Tutorial    FAQ

## 2 Register a New Account in the App

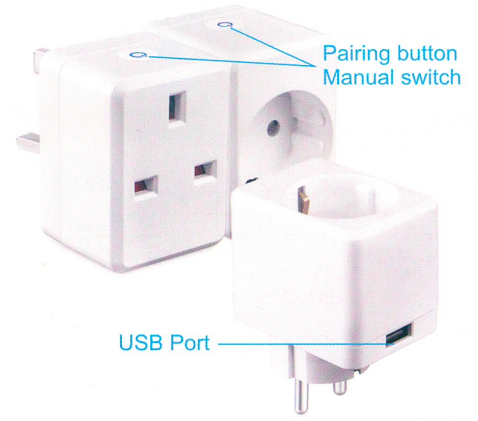
Input your phone number/Email, and Set a Password for your Account.

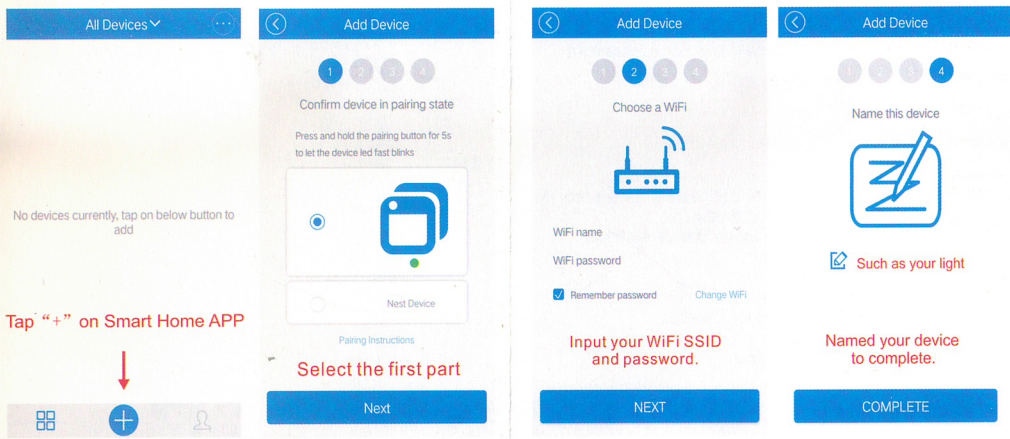
## 3. Plug in

## 4. AP configuration

- 4.1 Press and hold Socket's ON/OFF button for 5 seconds until GREENER LED repaid flashes.
- 4.2 Go to your smart phone or tablet device settings.
- 4.3 Go Back and open the App.
- 4.4 Tap "+" symbol.
- 4.5 Tap 'Next' to confirm device on pairing state.
- 4.6 Tap 'Next' to choose a WiFi for Device.
- 4.7 Waiting Pairing.
- 4.8 Socket will connect to the App.

**Noted:** Please contact SAME wi-fi like your phone





**WARNING**  
Indoor use only  
Plug in fully to the wall outlet while using  
Do not insert a conductor or other tools to the socket hole  
Do not use in bathroom and other damp locations  
Please ensure the security of the electricity, resistive load current cannot be higher than 10A  
Please keep the device out of the reach of children to avoid danger



Multi language  
Manual

IOS user can try the second option(AP), manual configuration.