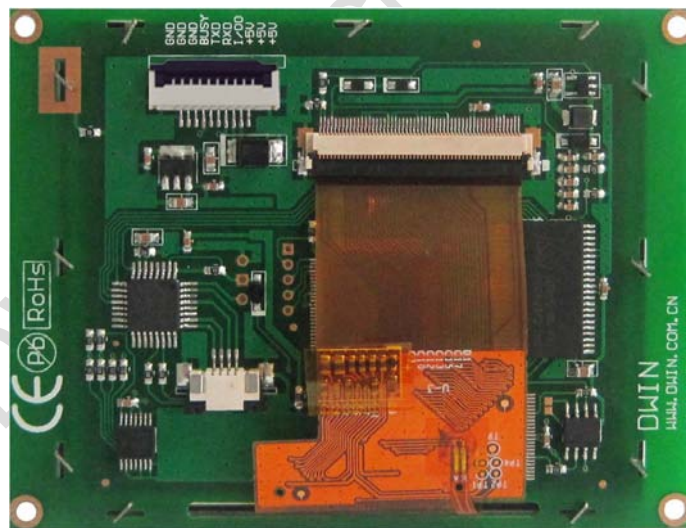


DMT32240C035_02W

3.5 Inches, 320xRGBx240, 65K Colors, UART LCM



Record of Revision

Revise Date	Content
2011-11-01	First Edition

● Display

Item	Parameter	Description
Color	65K (65536) colors	16 bit color 5R6G5B
Active Area (A.A.)	70.1mm (W) × 52.6mm (H)	320 × 240
View Area (V.A.)	73.2mm (W) × 55.5mm (H)	320 × 240
Resolution	320 × 240	90° rotation by using command 0xE0 (240x320)
Backlight	LED	-
Brightness	250 nit (DMT32240C035_02WN)	64 levels adjustment by using command 0x5F
	200 nit (DMT32240C035_02WT)	64 levels adjustment by using command 0x5F

● Voltage & Current

Item	Conditions	Min	Typ	Max	Unit
Power Voltage	-	3.3	5.0	6.0	V
Operation Current	VCC = +5V, Backlight on	-	250	-	mA
	VCC = +5V, Backlight off	-	130	-	mA

Recommended power supply: 5V 0.5A DC

● Reliability Test

Item	Conditions	Min	Typ	Max	Unit
Working Temperature	60%RH at 5V voltage	-20	25	70	°C
Storage Temperature	-	-30	25	85	°C
Working Humidity	25°C	10%	60%	90%	RH
Protective Paint	-	-	None	-	-
Aging Test	-	-	None	-	H

● Interface

Item	Conditions	Min	Typ	Max	Unit
Baudrate	I/O0=1 (High Voltage)	1200	115200	691200	bps
	I/O0=0 (Low Voltage)	-	921600	-	bps
	High-Speed Downloading	-	6.25	12.000	Mbps
Output Voltage (TXD, BUSY)	Output 1, Iout = 1mA	3.0	3.2	-	V
	Output 0, Iout = -1mA	-	0.1	0.2	V
Input Voltage (RXD, I/O0)	Input 1, Iin = 1mA	2.0	3.3	5.0	V
	Input 0, Iin = -1mA	-0.7	0.0	1.3	V
Buffer	-	-	24	-	Frame
Interface	8N1, 3.3V TTL/CMOS				
Socket	10Pin_1.0mm FCC				
USB	None				
SD Slot	None				

● Memory

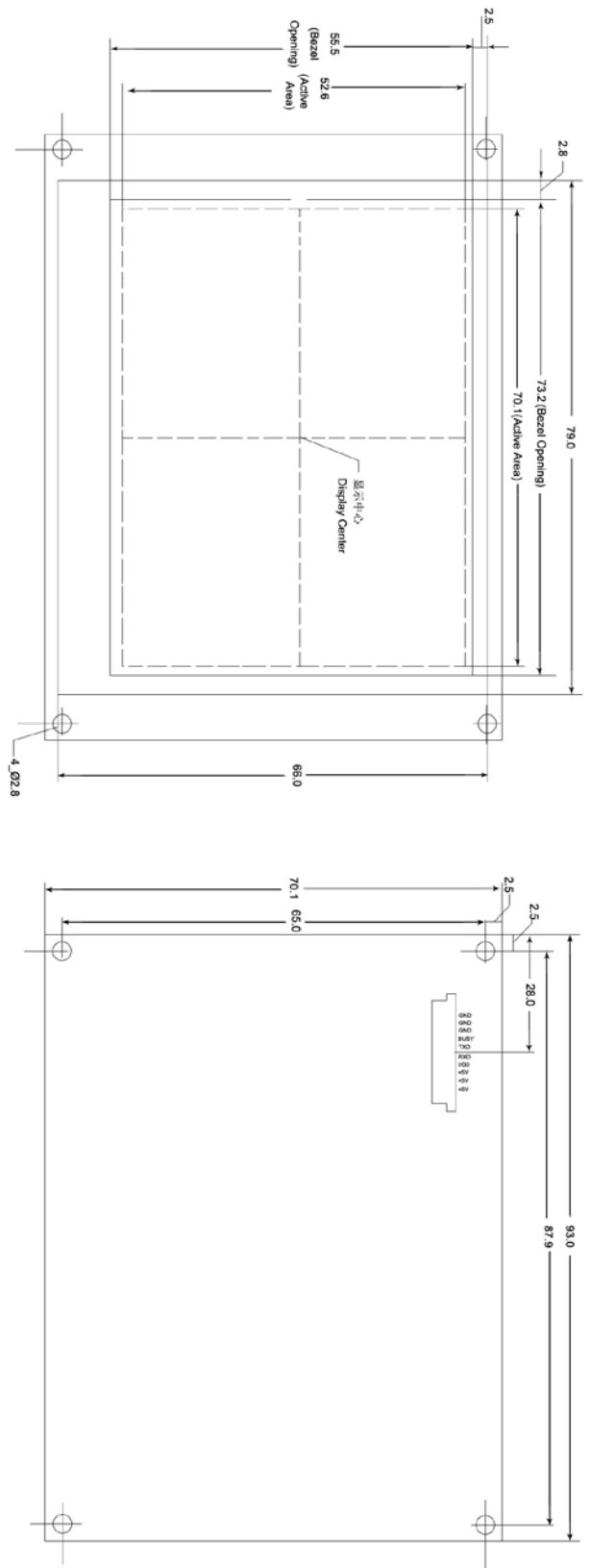
Item	Parameter	Min	Typ	Max	Unit
Flash	Space of Font	-	32	-	MB
	Picture Storage (128MB)	-	-	374	Pcs
	Picture Storage (1GB)	-	-	3888	Pcs
	User Memory	0	-	32	MB
RAM	Serial Access Memory Space	-	80	-	KB

● Command Set & Peripheral

Command Set & Peripheral	
Command Set	HMI Command Set M600 (M100)
Peripheral	DMT32240C035_02WN : None DMT32240C035_02WT : 4-wire resistance touchscreen

● Packing Capacity & Dimension

Dimension				
Dimension	93.0 (W) × 70.1 (H) × 7.7 (T-WN) / 8.8 (T-WT)mm			
Net Weight	47g (DMT32240C035_02WN) 55g (DMT32240C035_02WT)			
Packing Capacity				
Model	Size	Layer	Quantity/Layer	Quantity(Pcs)
Carton1	220mm(L)×160mm(W)×47mm(H)	1	2	2
Carton2	250mm(L)×200mm(W)×80mm(H)	2	2	4
Carton3	320mm(L)×270mm(W)×80mm(H)	2	4	8
Carton4	450mm(L)×350mm(W)×300mm(H)	2	35	70
Carton5	600mm(L)×450mm(W)×300mm(H)	2	75	150



1. 尺寸定位基准为显示中心
Display center is used as position reference
 2. 未标注公差为 $\pm 0.3\text{mm}$
Unmarked Tolerance is $\pm 0.3\text{mm}$
- Note: 虚线为显示区域 / Active area is mark in dashes.

引脚名称	引脚符号	引脚类型	说明	型号	图纸	比例	单位	日期
VCC	1,2,3	P	电源输入 / Power Input 标准逻辑电平 (0V/5V)	DMT32240C035_02W	A4	1:1	mm	
IC0	4	N	60 I/Os on-chip		绘图	审核		
R00	5	N	串行接口输入, 3.3V TTL CMOS DIN (3.3V TTL CMOS)		日期			
T00	6	OUT	串行接口输出, 3.3V TTL CMOS DO (3.3V TTL CMOS)		日期			
BUSV	7	OUT	串口使能信号指示 Busy/Driver-in Signal		日期			
GND	8,9,10	P	3.3V地 / GND		批准			

DWIN 北京迪文科技有限公司
Beijing DWIN Technology Co., Ltd.