

CT63 E

The entry level GSM terminal for standard M2M applications

The CT63 E is a self-contained terminal featuring the latest technology from Cinterion.

As a dual-mode GSM terminal operating in the 900 and 1800 MHz frequency bands, it can be deployed in all of Europe as well as a wide range of additional countries where both frequencies are available from network operators.

CT63 E is targeted towards System Integrators developing M2M applications where cost optimization is a key selection criterion. With the support of audio functionality, System Integrators can address a wide range of standard applications, including adding wireless connectivity to vending machines, smart meters, medical devices, and many more.

Key Benefits

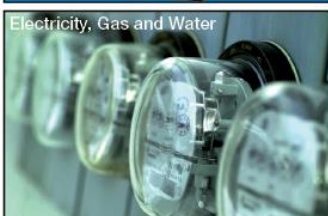
- Attractive pricing level
- Standard support for RS232 based access to terminal functionality
- Support for analogue audio

Key Features

- Entry-level dual band (900 & 1800 MHz) GSM terminal
- Cinterion AT command set
- RS232 (D-Sub 9-pin) interface
- Audio (Mini USB)
- Ultra-low power consumption mode

Sample applications

- Wireless interface for POS terminals with Audio support
- Remote monitoring of rechargeable battery powered devices



GSM / GPRS

- GSM / GPRS Frequency Band: Dual Band (900 / 1800 MHz)
- 3GPP Rel. 99 compliant
- GSM phase 2/2+ compliant
- GPRS Class: Class 10
- GPRS DL Datarate: 85.6 kbps
- GPRS UL Datarate: 21.4 kbps
- Output power: Class 4 (2W) for GSM900
- Output power: Class 1 (1W) for GSM1800

Mobile Network Features

- CSD: 14.4 kbps
- USSD
- SIM Application Toolkit: Rel. 99
- Fax Service: Fax Group 3, Class 1 & 2
- SMS text and PDU mode, cell broadcast

Voice

- Audio Interface: Analog (Microphone & Speaker)
- High quality voice support
- High quality handsfree operation
- FR, HR, EFR and AMR speech codec support

TCP/IP Stack

- TCP/IP stack access via AT commands

Special features

- Real-time clock
- Tunneling mode

Software

- AT Command Set: Cinterion
- AT Command Support: Hayes, TS 27.007 and 27.005
- Firmware Update: Serial
- Modem Driver: Microsoft® Windows XP™, Windows Vista™ and Windows 7™
- Multiplex Driver for Microsoft® Windows XP™, Windows Vista™ und Windows 7™
- RIL driver for Microsoft® Windows Mobile based devices

Interfaces

- RS232 Interface: D-Sub (9-pin)
- RJ11: Power
- Antenna: FME
- Audio (analogue): Mini-USB
- Robust 1,8/3 Volt SIM Card Holder
- LEDs: 1 GSM

Electrical Characteristics

- Voltage Range: 5V - 32V
- Standby (@ 12V): < 20 mA (*)
- Low Power Mode (@ 12V): ~2 mA (*)

Hardware Characteristics

- Operating Temperature: -40°C to +80°C
- Size: 77x66x26 mm
- Weight: 80g

Certificates

- CE

Optional Features

We can develop customized terminals according to your specialized requirements. Please contact your local sales representative or our headquarters to discuss your requirements.

(*) Measurement (including peaks) averaged over a 1 min interval.

Accessories (exemplary)

